



MONTHLY MEMBERSHIP PROGRESS REPORT

District 324A4

Results as of: 11/30/2018

GMT: N S SANKAR

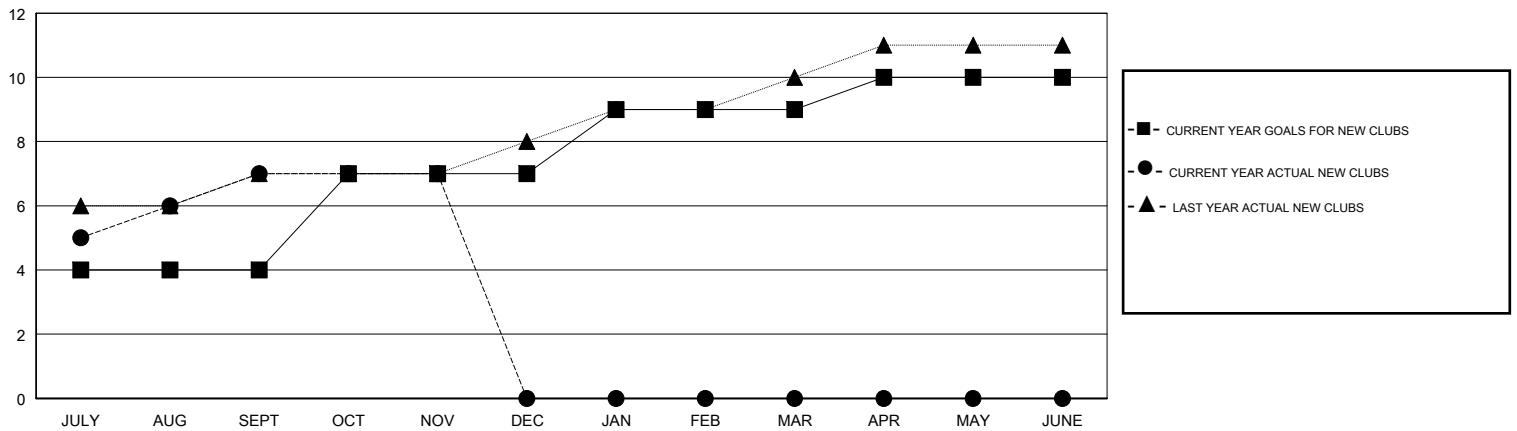
LOCATION INDIA

GMT CA

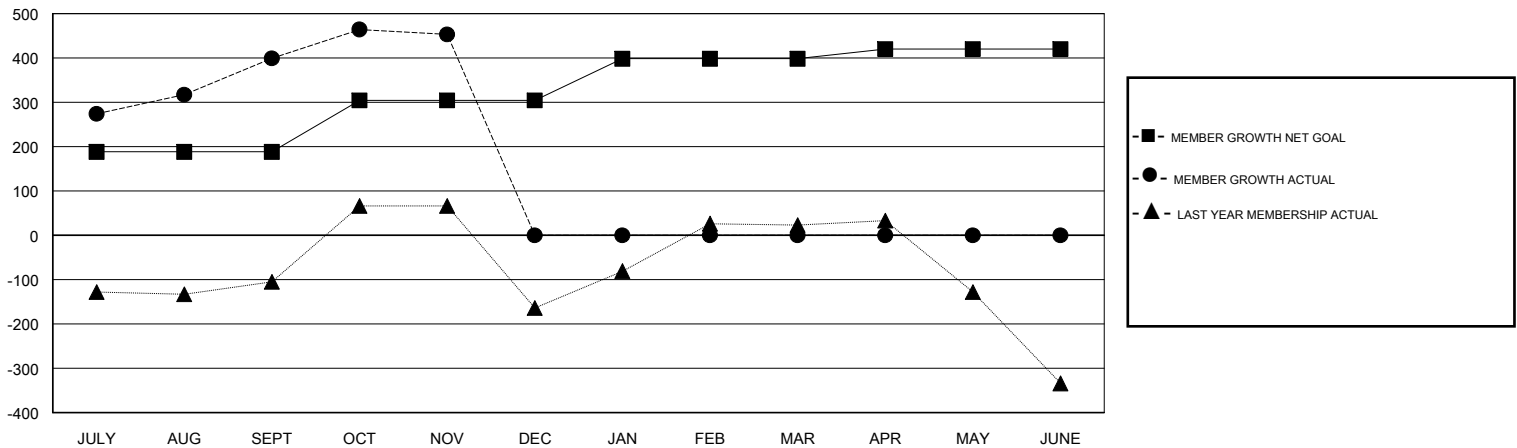
Clubs			
RESULTS FOR 2018-2019			
QUARTER	NEW CLUB GOAL	NEW CLUBS	DROPPED CLUBS
JULY/AUG/SEPT	4	7	2
OCT/NOV/DEC	3	0	0
JAN/FEB/MAR	2	0	0
APR/MAY/JUNE	1	0	0

Members			
RESULTS FOR 2018-2019			
QUARTER	MEMBER GROWTH NET GOAL	MEMBER GROWTH ACTUAL	DROPPED MEMBERS ACTUAL (including transfers)
JULY/AUG/SEPT	188	528	110
OCT/NOV/DEC	116	111	56
JAN/FEB/MAR	94	0	0
APR/MAY/JUNE	22	0	0

GOALS AND ACTUAL NEW CLUBS CUMULATIVE



GOALS AND ACTUAL MEMBERS CUMULATIVE



DROPPED CLUBS: 2	72 CLUBS OF 134 ADDED 1 OR MORE NEW MEMBERS	<u>GENDER DISTRIBUTION</u>	
DROPPED MEMBERS		MALE	4,869 (90.47%)
DECEASED	6	FEMALE	513 (9.53%)
CLUB CANCELLED	18	Women Percentage Fiscal Year Goal: 10%	
OTHER	142	TOTAL FAMILY UNIT MEMBERS	787
TOTAL	166	FAMILY MEMBERS PAYING HALF DUES	438

[CLICK HERE FOR CUMULATIVE MEMBERSHIP DATA](#)